

*Specialist Access Solutions*

**BROGAN**  
**GROUP**  
SCAFFOLDING, HOISTS & MASTCLIMBERS



**ACCESS**  
Specialist

# Table Of Contents

Welcome to Brogan Group	Page 1	Health and Safety	Pages 20 - 21
Services and Operations	Pages 2 - 7	Health and Safety Initiatives	Page 22
Clients, Partnering and Collaboration	Page 8	Environment	Page 23
Management and Workforce	Page 9	Quality	Page 24
Scaffolding	Pages 10 - 11	Trade Associations and Accreditations	Page 25
Staircases	Pages 12 - 13	Rail	Page 26
Mastclimbers	Pages 14 - 17	Training	Page 27
Hoists	Page 18	Specialist Areas of Work	Pages 28 - 29
Steel Loading Bays	Page 19	Project Profiles	Pages 30 - 39
		The Benefits of Using Brogan Group	Page 40
		Company Values	Page 41

 **Click Interactive contents** to progress to requested page

# Welcome to Brogan Group

We are an international scaffolding and access contractor, providing an award winning service for the supply and erection of scaffolding, mastclimbers and hoists to major contracts across the world.

Established by James Brogan in 1987, we have grown steadily, expanding to various countries including Ireland, Lithuania and the United Arab Emirates. The Group's growth can be attributed to our quality of services and strategic investment in new access technology, staff and training. Our in-house design team adds to our flexibility and innovation, giving us the capability to respond to our clients more technical challenges.

With a proven health and safety record and over 20 years experience, we are able to take on projects of any size and offer our clients a consistently reliable service.

*Our in-house design team adds to our flexibility and innovation giving us the capability to respond to our clients more technical challenges.*



# Services and Operations

We offer a range of access solutions including:

- **Scaffolding** (traditional tube & fitting and system scaffold)
- **Mastclimbers**
- **Hoists**
- **Steel Loading Bays**

Some of the sectors we work in include:

- **Education** – Universities, schools and colleges
- **Health** – Hospitals and clinics
- **High Rise** – Apartments, skyscrapers and commercial

- **Historic/Listed Buildings** – Churches, museums, theatres and castles
- **Housing** – Social and private, tower blocks and apartments
- **High Security** – Airports, prisons and government buildings
- **Industrial** – Oil and gas, print facilities and factories
- **Leisure** – Hotels, shopping centres, retail, theatres and cinemas
- **Rail** – Stations and bridges

Pre-tender assistance, including drafting access schedules and assisting in value engineering are also provided.



# Services and Operations

## Regions and Resources

We own in excess of €35 million (\$50 million US dollars) of scaffolding (both traditional and system), mastclimbers and hoists which allows us to service many large projects at the same time.

We operate across the UK, Ireland, Lithuania and the United Arab Emirates. Our depots are all interlinked, enabling transfer of equipment between depots at short notice.

### UK

- Head office and depot in North London
- Depot in Liverpool

### Ireland

- Office and depot in South Dublin

### UAE

- Office and depot in Dubai
- Office in Abu Dhabi

### Lithuania

- Office and depot in Vilnius



## Transport Fleet

Our depots are equipped with a large, efficient and modern fleet of handling equipment and delivery vehicles to suit the various sized projects the company undertakes. The fleet includes crane mounted trucks, flatbed trucks, telehandlers, forklift trucks and a variety of delivery vehicles. Our truck mounted cranes can load, off load and hoist materials to a height of 21m directly from the trailer, enabling efficient loading and fast turnaround of deliveries.

Our teams of dedicated drivers are all fully qualified to operate truck mounted cranes. Vehicles and machinery are maintained by in-house maintenance teams, minimising breakdowns and downtime for repair.



# Services and Operations

## Design & Fabrication

We are specialists in complex design solutions and temporary works schemes. All design work is carried out in house, providing tailor made solutions to our clients. Working together with our fabrication team, the design department develops forward thinking solutions that are innovative and unique to each requirement.

- News International Pressworks (Broxbourne, UK)
- Lansdowne Stadium (Dublin, Ireland)
- Wallis House (Brentford, UK)
- Grosvenor Apartments (Park Lane, UK)
- Olympic IBC / MPC Building (Stratford)
- Hulf Penny Bridge (Ireland)

## Design Services

- Scaffolding design (including temporary roofs and gantries)
- Mastclimber, hoist and steel loading bay design
- Structural steel
- Propping and Falsework
- Event staging
- Tailor made solutions

Designs and structural analysis are produced using industry standard software including AutoCAD, and are available to clients in a variety of formats including large format prints, as well as pdf and dwg file formats.

Some of the more notable projects we have provided design for include:

- Heathrow Terminal 5 (London, UK)
- Capital Gate (Abu Dhabi, UAE)
- Natural History Museum (London, UK)
- Queens Alexandra Hospital (Portsmouth, UK)

## Pre-tender Consulting Service

Included within our comprehensive estimating service, we offer expert advice on the types of access solutions best suited at pre-tender stage. This enables our clients to prepare accurate tenders for pricing.

*"I have never been informed by Brogan Group that a scaffold design has not been possible to achieve. They have never failed to provide a construction solution to any of our projects. This just illustrates their forward thinking and positive attitude towards our projects"*

**Peter La Plain - Regional Director - John Sisk and Son**



# Clients, Partnering and Collaboration

We work with many of the top 20 construction companies across the UK, Ireland, Lithuania and the UAE. Our relationship with many of these has continued over periods of more than twenty years. Being certified to ISO 9001 for our quality management system means that we are always trusted by our existing and potential clients to consistently deliver results and satisfy all project requirements.

By partnering and working closely with clients, it enables us to build better relationships, deliver

on service, provide the best value and have a better understanding of their expectations and requirements .

Many clients operate supply chain management schemes or preferred supplier initiatives. In most cases we are on a national shortlist of between three and five scaffold contractors. The pre-qualification and vetting processes involved in achieving 'preferred supplier' status are rigorous and we are audited on a regular basis.



# Management and Workforce

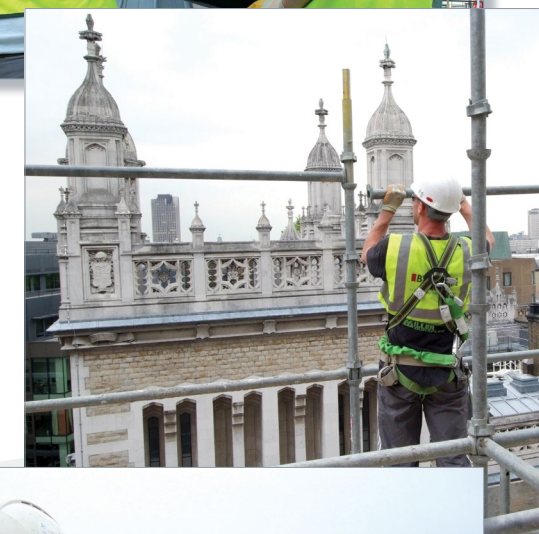
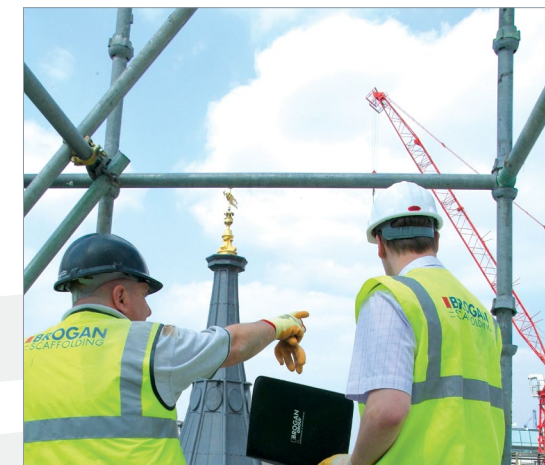
Many within our workforce have been with the company for over a decade, and our Supervisors are highly experienced in running large sites and achieving high levels of production.

Our professional, experienced workforce are directly employed and extensively trained, to give them the skills they need. They are empowered to get the job done in a safe and efficient matter, being flexible and giving attention to client needs. Our site teams are quick to react to clients requirements at short notice.

Our Commercial department is flexible and cooperative, assisting our clients in their financial forecasting. Over they years they have developed professional relationships with the client teams.

*"I have used other scaffolding contractors to cross check Brogan's performance and technical criteria only to find that Brogan Group offer a much higher quality workforce"*

**Alan Grant - Construction Manager - BAM Construct UK**



# Scaffolding

There are generally two types of scaffolding commonly used, traditional and system. Whilst system scaffolds dominate Europe and the UAE, traditional tube and fitting continues to be the most common type of scaffolding used in the south of the UK. We own large stocks of both types of scaffolding, and have predominately used system scaffold since 1997.

## Traditional Tube & Fitting

We continue to hold large stocks of traditional tube and fitting due to its inherent flexibility. We commonly use it for internal scaffolds, gantries and handrails, however, we regularly use tube and fitting for envelope works when it is a more appropriate solution than system scaffolding.

We only use tube with a 4mm wall thickness that complies with BS1139. We source our boards from only sustainable sources and are all machine stress graded to BS2482. We independently test samples of equipment we receive from our suppliers, to ensure that they meet the relevant British Standards and our own rigorous quality criteria.

## System Scaffolding

For envelope contracts we generally use system scaffolding. System scaffold's speed of erection over traditional tube and fitting is one of its key benefits. We hold a number of different systems including:

- Cuplok System
- Haki System
- Layher System

## Scaffolding Accessories

We also stock a number of accessories that are compatible with traditional as well as system scaffold.

### Extendable Transoms

Commonly used where there is a need to adapt the scaffold's inner boards to suit different trades, they can provide quicker adaption, especially when using traditional tube and fitting.

### Ladder Gates

These are installed at ladder access openings to reduce the risk of a fall through the opening.

### Combisafe

Combisafe is used to provide edge protection as well as fan protection. Combisafe Safety Net Fans protect the general public from falling debris. They can be temporarily pulled in against the facade so they do not obstruct crane access. The larger Maxi-Fan which extends the depth and containment area are also available.

## Temporary Roofs

As well as traditional tube C.I sheeted roofs, we stock a wide range of temporary roof systems. We design and erect roofs including:

- Mono Pitch or Dual Pitch
- Sliding roofs or with removable sections to allow cranes to lower in materials through the roof
- Span very large distances (25m plus) and/or with unusual pitches



# Staircases

## Staircases

We provide a number of traditional and system staircases.

### HAKI Staircases

HAKI Staircases have a small footprint making them ideal for sites with limited space. They can be erected freestanding or integrated into the main scaffold. As with all system staircases, the guardrails form part of the frame.

### Cuplok Staircases

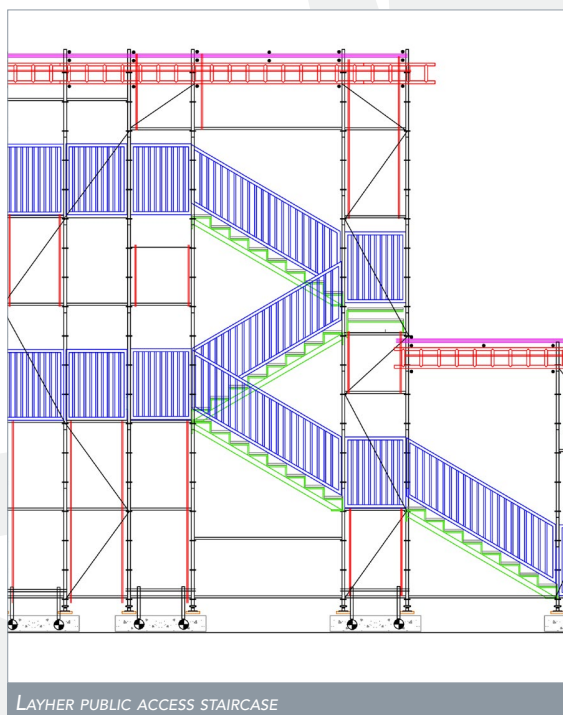
Cuplok staircases are larger than HAKI staircases and designed to integrate fully as part of a Cuplok scaffold or can be freestanding.

### Tube and Fitting Staircases

Where a system staircase is not suitable and a bespoke design is required, a tube and fitting staircase is the most flexible option. Non slip stair treads and landings can be provided in either metal or timber.

### Layher Staircases

Where there is a requirement for a public access staircase, we use Layher's Public Access Staircase. It meets all the additional demands required for public access, including child safety guardrails, minimum stair widths, a reduced stairway pitch and a large loadbearing capacity.



# Mastclimbers

As an alternative to scaffolding, mastclimbers are a safe, fast and a cost effective solution for transporting personnel and materials to the point of work, making them ideal for envelope contracts.

We stock a wide range of mastclimbers for cladding and heavier applications including bricklaying and rendering. The working deck can be cantilevered on either end and can also be cantilevered around corners.

Through the use of telescopic extensions, mastclimbers can step into recesses in the building facade making them suitable for more than just straight facades. Mastclimbers can be either single or twin mast configurations, which allow for longer continuous platforms.

We provide an induction for the end user together with a manual. Inductions are given prior to handover, and carried out by a qualified member of our team. Our installers have manufacturer training and additionally IPAF training also. Our team includes an IPAF instructor.



## Lightweight Applications

### Camac 2000

Suitable for general access, glazing (non-loading) and cleaning works.

## Mediumweight Applications

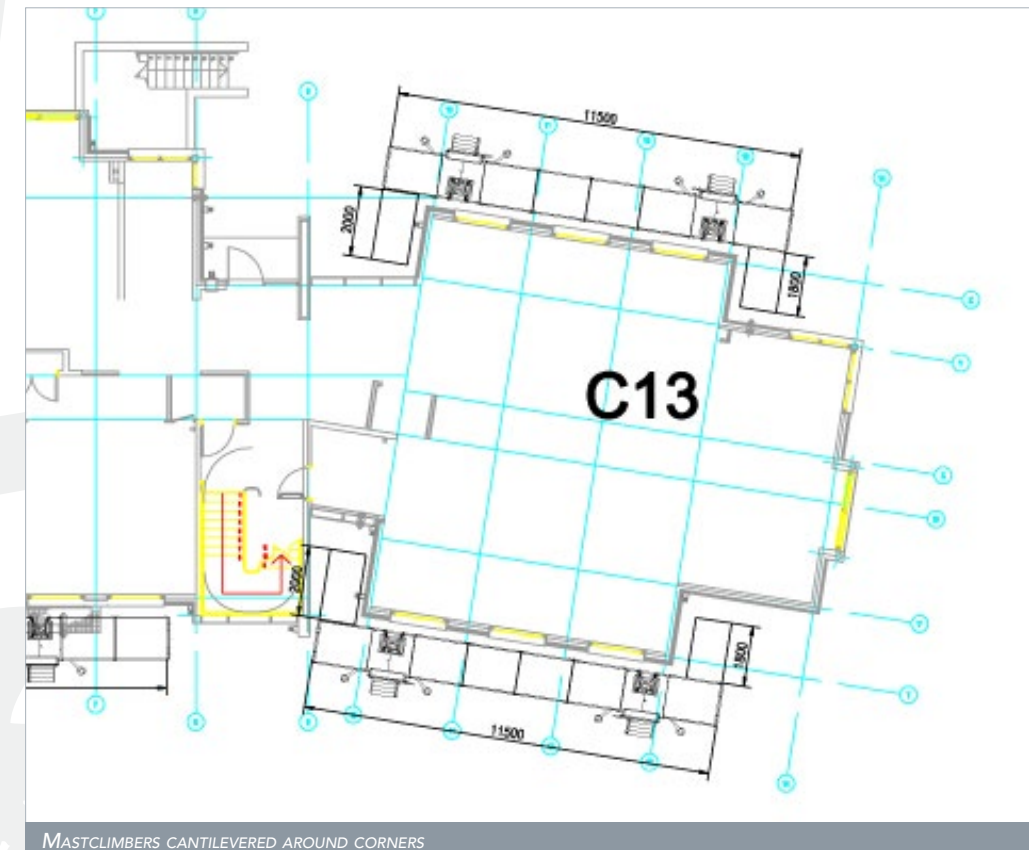
### Camac 3000 Fraco ACT-4 Scanclimber SC4000

These mastclimbers are suitable for glazing, cladding, brickwork and blockwork. The Fraco ACT-4 is also available in a diesel powered version.

## Heavyweight Applications

### Fraco ACT-4 Fraco ACT-8 Scanclimber SC5000 Scanclimber SC8000

These are suitable for almost all applications and capable of supporting heavier loads. The SC8000 is our newest mastclimber can take a load of up to 8,000kg as a twin, ideal for very heavy duty applications.



MASTCLIMBERS CANTILEVERED AROUND CORNERS

# Mastclimbers

## Configuration Options

### Platform Extensions

The working platform length can be extended through the use of cantilever platforms at either end of the main deck. Additionally the deck can step in and out to match the building profile through the use of telescopic extensions.

### Returns

Returns allow the working deck to go around corners as well as into deeper recesses in the building profile.

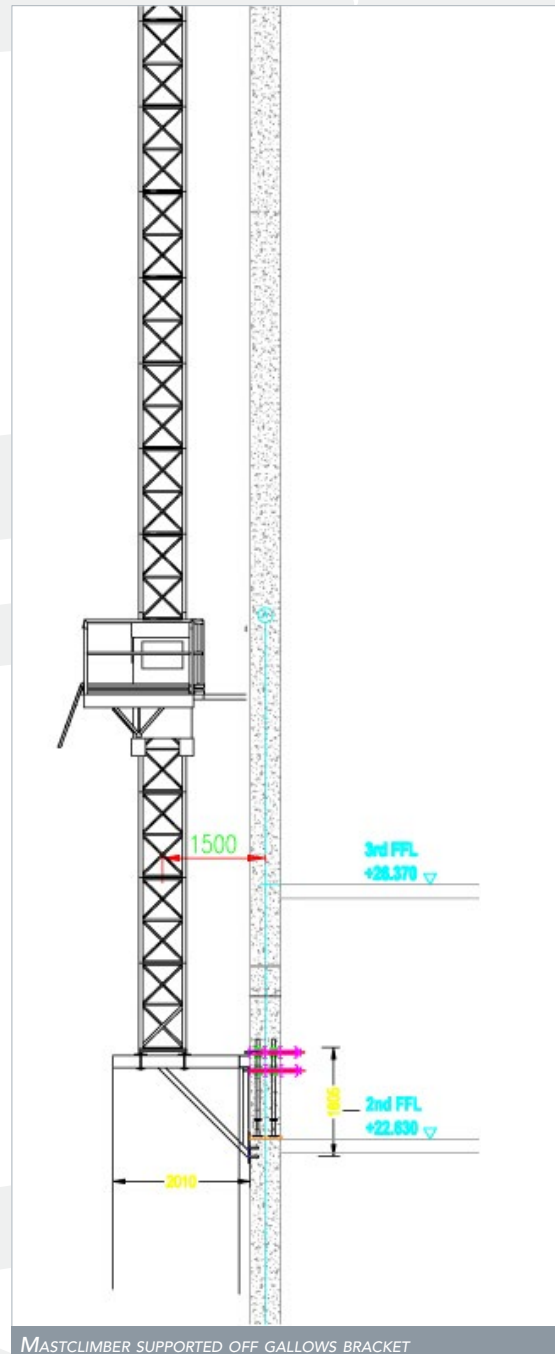
### Tie-In Options

Mastclimbers are generally tied to the structure. They can also be freestanding up to 25m.

### Base Options

Bases available include a mini-chassis, standard base and freestanding to suit application and space available on the ground. The mastclimber can also be supported off a gallows bracket, where ground clearance available is minimal.

*Returns allow the working deck to go around corners as well as into deeper recesses in the building profile.*



# Hoists

## Hoists and Transport Platforms

Our range of hoists and transport platforms range from a small, compact unit suitable for use in confined spaces such as lift shafts, up to our largest hoist capable of transporting 2000kg of goods or 24 personnel. Features of our hoists include large payloads, cage sizes suitable for taking palletted goods and side and end loading options.

We provide an induction for the end user together with a manual.

### SC2032F Goods and Personnel Hoist

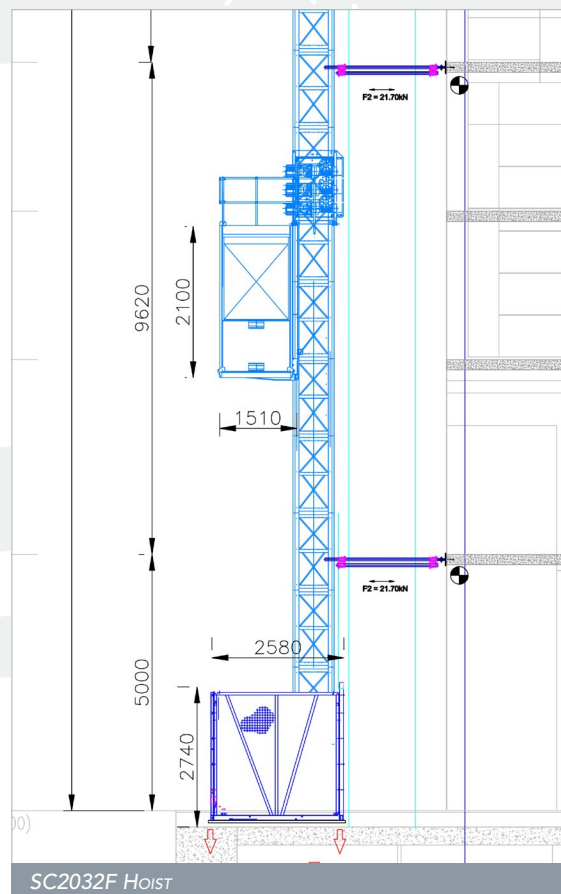
Our largest hoist, it has a payload of either 2000kg or 24 personnel. It has a lifting speed of 36m with a large cage size of up to 3.2m x 1.5m. A side loading door is also an option.

### EC600 Goods Hoist

Our most compact hoist which can be installed into most lift shafts, and takes a payload of 600kg.

### ECP1500 Transport Platform

This can be used as a goods hoist with speed of 24m/min or as a transport platform with a speed of 12m/min (with roof installed). The payload is 1500kg.



### EC1700 Goods Hoist

Similar to the EC1500 but larger and with a bigger payload, it can be fitted with a basket suitable for taking plasterboard sheets and other large items.

Model	Goods	Personnel	Max Lifting Speed (m/min)	Max Payload (kg)	Max Height (m)	Max Cage Dimensions (l x w) (m)
SC2032F	Yes	Yes (up to 24)	36	2000	300	3.2 x 1.5
EC600	Yes	No	29	600	120	1.6 x 1.1
ECP1500	Yes	Yes (up to 7)	Goods: 24 Personnel: 12	1500	150	3.4 x 1.4
EC1700	Yes	No	20	1700	150	1.75 x 1.8

# Steel Loading Bays

Steel loading bays can be installed individually or as vertical series of loading bays to multiple floors. We have a partnership agreement with Xena Systems to be the sole provider of their platforms and cranes to the Irish market.

**Our range of platforms include:**

## Standard Platform

Suitable for general applications where retractability is not required and has a SWL of up to 5 tonnes.

## Rolling Platform

Where simultaneous access to several levels from one lifting point is required, rolling platforms are a solution. The platforms are vertically stacked and can be rolled back to the building line to allow crane access to the required platform.

## Underslung Platform

Where retractability is not required and there is a need for level loading at the slab edge, an underslung platform provides a 5 tonne SWL.

## X12 Crane

This floor mounted crane is designed to reduce dependence on tower cranes, supplying one platform or a stack of rolling platforms. It has a lifting capacity of 2 tonnes and can be used in lift shafts and tunnels where conventional cranes cannot normally be used.



# Health and Safety

As an access contractor Health and Safety is our main priority. We employ a team of professionally qualified health and safety advisers and 100% of our site workforce is **CSCS** and **SG4:05** trained. Our integrated management system is certified to **BS OHSAS 18001:2007** and promotes a safe and healthy working environment by providing a framework that allows us to:

- Assess risks and apply suitable controls
- Ensures compliance with current and future legislative, regulatory and industry specific requirements
- Define roles, responsibility and subsequent organisational structure
- Communicate with internal and external customers
- Provide training, awareness and verify competence
- Implement controls for the management of operational hazards
- Publish and test plans for emergency situations
- Measure and monitor performance
- Identify areas for continual improvement



# Health and Safety Initiatives

workplace can be modified by addressing these major influences.

Our integrated management system includes a continuous improvement process. As a result, we have introduced a number of new initiatives:

## Interactive Induction

All new employees with the company must first attend an induction at head office. The induction is a comprehensive grounding of all aspects of health, safety and operational policies and concludes with a touch screen test which they must pass to confirm their understanding. It is our intention to re-induct all current employees as well.

## Substance Misuse Policy

We operate a strictly defined Substance Misuse Policy, to ensure that the use of substances by any employee or person(s) associated with the company does not impair the safe and efficient running of the business or put anyone at risk. Random alcohol and drug testing is carried out by an independent specialist to help enforce the policy.

## Behavioural Safety Training

Health and safety in the workplace is influenced by a number of factors such as the organisational environment, management attitude, nature of the task and personal attributes. Safety related behaviour in the

*"Site management are particularly pleased with the company's attitude to Health & Safety. Their overall performance on this site is a credit to the industry."*

**BAM Construct UK**  
Site Management - 20 Gracechurch Street

**BROGAN GROUP**  
SCAFFOLDING, HOISTS & MASTCLIMBERS

# Environment

We are committed to achieving high standards of environmental performance, preventing pollution and minimising the impact of our operations. Our integrated management system is certified to **BS EN ISO 14001:2004**.

It aims to promote environmental awareness and provide a framework to ensure compliance

with relevant environmental law or the adoption of responsible standards where no legislation exist.

We continue to raise environmental awareness internally through the development and training of our employees as well as externally through interaction with clients and suppliers.



# Quality

Our longstanding reputation for quality and service has been achieved by working with our clients closely. We focus on customer satisfaction and understanding their requirements. Our quality management system is certified to **BS EN ISO 9001:2008**.

Eight quality management principles form the basis for the standard:

- Customer Focus
- Leadership
- Involvement of People
- Process approach
- System approach to management
- Continual improvement
- Factual approach to decision making
- Mutually beneficial supplier relationships



# Trade Associations and Accreditations

## Trade Associations

We are members of numerous trade associations relevant to the specialist access sector including:

- National Access and Scaffolding Confederation (NASC)
- International Powered Access Federation (IPAF)
- Construction Plant Hire Association (CPA)
- Construction Industry Federation (CIF)
- National Association of Scaffolding and Access Contractors (NASAC)

## Industry Accreditations

Our processes and systems have been accredited to a number of different schemes including:

### Building Confidence



A supplier pre-qualification and accreditation service for the UK construction industry.

### FPAL



The oil and gas industry supply chain scheme in the UK and the Netherlands.

### Link-Up



The UK rail industry supplier qualification scheme

## National Competency Control Agency Sentinel Scheme

A management system run by Network Rail that ensures that we are compliant with the requirements to carry out safety critical work on the railway.

### OHSAS 18001



Our occupational health and safety management system is accredited to this standard.

### ISO 14001



Our environmental management system is accredited to this standard.

### ISO 9001



Our quality management system is accredited to this standard.

### UVDB and Verify



The UK Utilities Industry pre-qualification scheme. Verify is an extension to UVDB to further assess Safety, Health, Environment and Quality (SHEQ) capabilities.

## Rail

We offer a range of access solutions for works on and around railways including stations, line extensions, bridges and maintenance and repair works. We are accredited to Link-Up as well as the NCCA Sentinel scheme.

Previous rail projects include the extension of the East London line in London and the Leixlip Railway Station development in Ireland. We are approved to work on Network Rail, London Underground and the Docklands Light Railway.



## Training

We are committed to training and recognise that the most important resource for a successful business is its staff. Spending on training excluding salaries for employees or courses continues to increase year on year to 1.78% of turnover in 2008, demonstrating our commitment and extensive investment.

The company takes an integrated approach to managing training and health and safety, with our management system accredited to **OHSAS ISO 18001:2007** and **ISO 14001:2004**. We are working towards **ISO 9001:2008** and **Investors In People** with the target to be accredited to these standards during 2010.



# Specialist Areas of Work

As a Group we specialise in large new build and refurbishment projects. We are capable of undertaking a wide range of project types including complex projects such as:

- Shopping centres
- Historic buildings
- Bridges
- Tower Blocks
- Working over water
- Working over railways
- Designed scaffolding
- Multiple user scaffold management
- Sensitive buildings.

We have also worked on high security projects including the Cabinet Office in Whitehall, Prisons (Pentonville Prison), Art Galleries (National Gallery), Opera Houses (Royal Opera House) and airports (Heathrow T5C).



# Project Profiles



## LARGE REFURBISHMENT

### PROJECT NAME - NO. 1 LOTHBURY

The project involves the construction of a new 117,500sq ft office building, located in the City of London opposite the Bank of England.

Works involved the erection of demolition scaffold to the retained facades for McGee. In addition, gantries and hoists were erected for the rebuild by main contractor Galliford Try.



### PROJECT NAME: ANGEL BUILDING, LONDON

The Angel Building project is the refurbishment of the early 1980's commercial building on a prominent but under-used site opposite the underground station.

Works involved the erection of internal and atrium access for the refurbishment contract which included new cladding and extending floor space for main contractor BAM Construction.

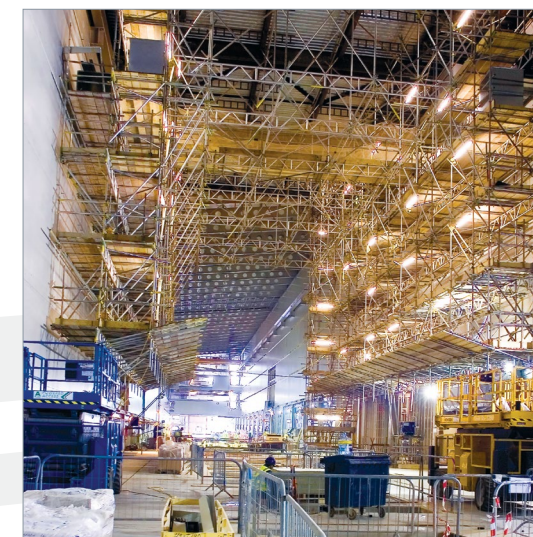
## NEWBUILD

### PROJECT HAL, NEWS INTERNATIONAL, HERTFORDSHIRE

Carillion was the contractor on this £160m project to construct a new print facility in Broxbourne (London) for News International.

Scaffold loading bays were erected to enable the delivery of M&E Plant and other equipment from various floor levels. Large bridged birdcage scaffolds were also created for M&E contractor Skanska.

In addition to this an internal mobile scaffold was erected 10m high by 25m long, as well as miscellaneous other scaffolds amounting to approximately £4million total scaffold package.



### PROJECT NAME: CAPITAL GATE, ABU DHABI

Works at capital Gate involved the erection of scaffold and gantries to the Splash Feature for cladding access. Reaching a height of 90m+ this is one of the highest scaffolds to be built off the ground in the UAE.

The project presented challenges to the design team to incorporate the cladding feature extending through the scaffold structure. The main contractor for this site was Al Habtoor and cladding was by Waagner Biro.



# Project Profiles



## HEALTH & EDUCATION

PROJECT NAME: QUEEN ALEXANDRA HOSPITAL, PORTSMOUTH

This PFI project consisted of the redevelopment of Queen Alexandra Hospital including an extension to the existing hospital.

Our remit included the complete access package for main contractor Carillion, which took place over approximately 2 years with a scaffold value of circa £2m.



PROJECT NAME: Highbury Grove, London

The BSF project involved the refurbishment of Highbury Grove School. The focus of the design is the 'wrapping' of nine faculty bases around a new garden and external learning space. Internally, a day lit covered street creates a sociable route linking the school with resource and support areas.

Works included the erection of perimeter access & internal scaffold to the sports halls for main contractor Balfour Beatty Construction Ltd.

## HIGH RISE

PROJECT NAME: TOWER WEST, LIVERPOOL

'Walkie-Talkie' Tower at 20 Fenchurch Street. Includes construction of a viewing deck and sky gardens that when finished will become London's highest park.

The project was a complex and unique challenge for Brogan Group providing a specialist design for what is claimed as 'the building with more up top'. The specialised roof Fin structure required extensive support scaffold structures to be built overlooking the Thames some 150m above ground level.



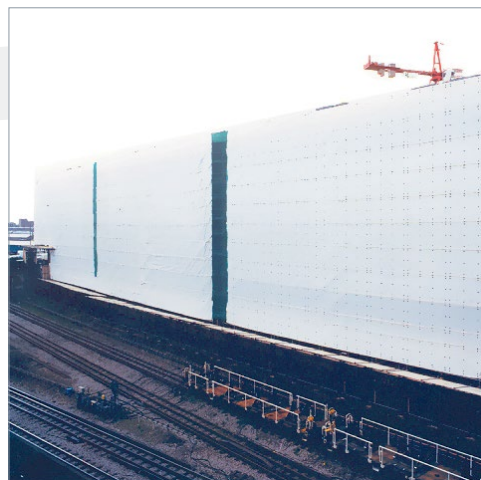
PROJECT NAME: BEETHAM TOWER, MANCHESTER

This £150m High Rise development for Carillion is located in Manchester and stands 171m tall. The Beetham Tower houses a Hilton Hotel and private apartments. At the time this was the highest residential building in the UK.

Works included erecting an independent access scaffold to the 'fin' at the top of the building.



# Project Profiles



## RAILWAY

### PROJECT NAME: WEST KENSINGTON, LONDON

West Kensington comprised of new build offices and apartments above existing offices. Work involved erecting independent scaffold over Railway lines at West Kensington, London during possession hours.



### PROJECT NAME: LEIXLIP RAILWAY, IRELAND

Works at Leixlip Railway included erecting access & gantries to the new railway building; including bridging over the railway lines for main contractor CLG Developments.



### PROJECT NAME: EAST LONDON LINE, LONDON

Our remit for East London Line included the full scaffold packages for main contractor Carillion, including internal and external access, loading bays and safety scaffolding.

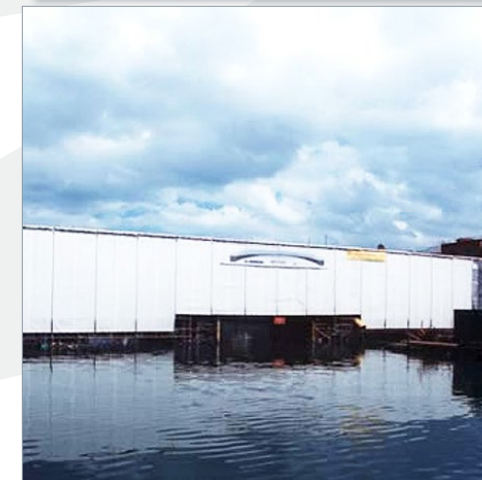
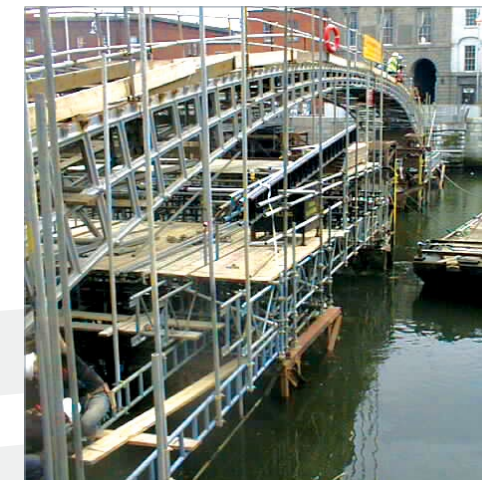
## BRIDGES

### PROJECT NAME: HALFPENNY BRIDGE, IRELAND

The bridge was closed in 2001 for major refurbishment works. The repairs to this historic Dublin landmark structure included the replacement of the railings, decks and parts of the truss structure.

Our works included providing access to main contractor Irishenco Construction for refurbishment works. Scaffold was erected off sunken barges in the river Liffey, Dublin Ireland. The project included the encapsulation of the entire bridge and presented design and construction challenges.

The river is tidal and the supporting scaffold had to be constructed off sunken barges on the river bed.



# Project Profiles

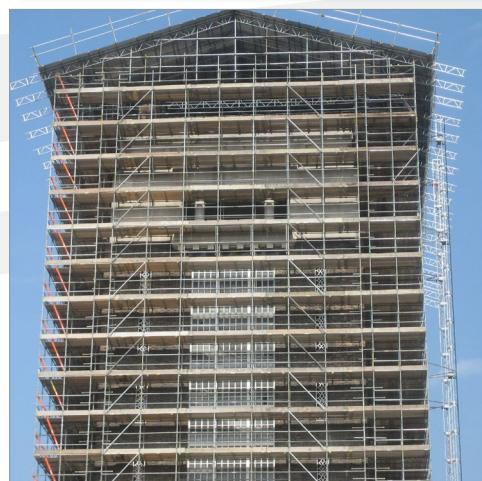


## TEMPORARY ROOFS

PROJECT NAME: GRACECHURCH STREET,  
LONDON

The 19 storey building was refurbished under a £80m contract by BAM Construction, and is one of the largest office developments in the city.

Works involved the provision of a temporary roof, full access scaffold built off gantries and miscellaneous scaffolds. The site also won the prestigious gold award from the City of London on the Considerate Contractors Scheme.



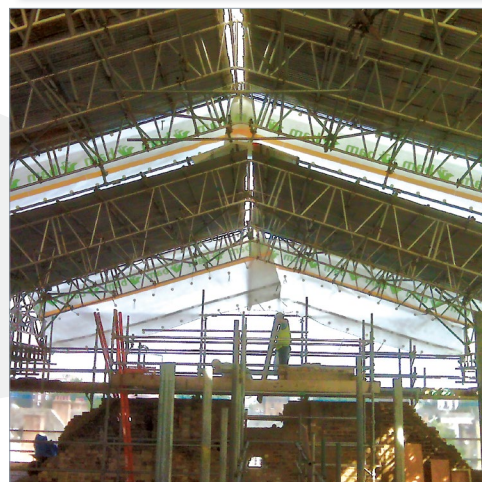
PROJECT NAME: GREAT WEST QUARTER,  
LONDON

This project is part of the urban regeneration of the Great West Road Corridor. Our remit included temporary roof, full access scaffolds and hoist to the existing building and new build blocks. The West London Development for Barratt Homes amounted to a total scaffolding value of approximately £1.5million.

PROJECT NAME: UNISON HQ, LONDON

The development includes the refurbishment of the existing building and the construction of a new office building.

Works include miscellaneous scaffolds and a sliding roof over existing buildings for BAM Construction at Unison's new HQ in London. The temporary roof has been designed to open for material access by crane.



## HISTORIC / GRADE A LISTED

PROJECT NAME: KILLEEN CASTLE, IRELAND

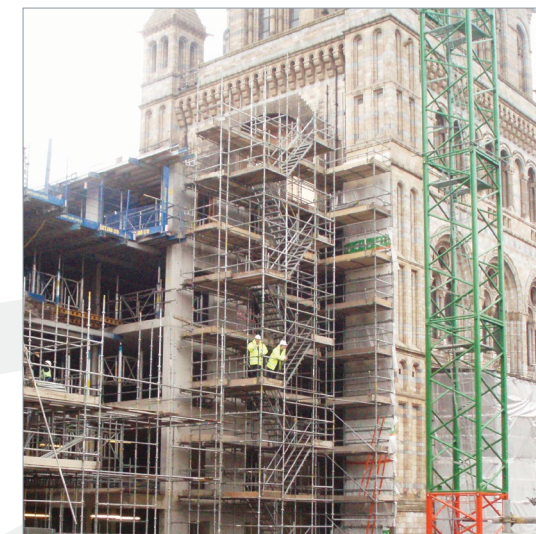
The Killeen Castle project involved the renovation of the 400 year old castle, located in Co. Meath, Ireland, for main contractor Cleary & Doyle.

Work included the provision of a temporary roof, full perimeter scaffolds, loading perimeter scaffolds and loading bays with bridging in steel beams with a 17m span.



PROJECT NAME: NATURAL HISTORY MUSEUM,  
LONDON

Our scope of works for HBG (BAM Construction) at The National History Museum included access scaffolds, and loading bays. A specially designed free standing scaffold was erected to construct a free standing cocoon, which stands 30m high and forms a special feature within the new extension.



# Project Profiles



## SHOPPING CENTRES

PROJECT NAME: ROCHES STORE, DUBLIN

The project involved the supply of internal and external access to Roches Store in Dublin including scaffolds built off gallows brackets bolted to the wall. The total scaffold package was valued at €2.5m.



PROJECT NAME: ILAC CENTRE, DUBLIN

The Ilac Centre, located on Henry Street is one of Ireland's first large shopping centres, with the project being its first major refurbishment since it was built in the 1980's.

Works comprised of mainly internal access to the malls with minimal supporting towers to allow the shops to continue to trade during the refurbishment of the centre, and the replacement of the roof structures to the malls. The spans across the malls were achieved using structural steel. Temporary roofs were erected externally over the mall roofs during their removal.

## AIRPORTS & SEAPORTS

PROJECT NAME: HEATHROW TC5, LONDON

The project comprises the construction of the second satellite building to Terminal 5 at Heathrow Airport with the total project value estimated at £300 million.

The overall access requirements consist of external and internal scaffolding, loading bays as well as hoists. The site is an inland site within an airside environment.



PROJECT NAME: DUBLIN AIRPORT, IRELAND

The project comprised of a €54m extension to Terminal One, to improve passengers journey to Piers A and D by adding more circulation space, new airside retail and catering outlets, and a re-configured check-in area at the northern end of the terminal.

Our work comprised of erecting external scaffolds and loading bays for cladding and glazing works with a separate access scaffold bridge and staircases erected across the main luggage reclaim entrance. Internal works included erecting leading edge handrails, lift shaft scaffolds and blockwork scaffolds with a large birdcage scaffold above escalations and voids.



# The Benefits of Using Brogan Group

It's the unique combination of the following that makes Brogan Group the first choice for specialist access solutions with so many of our clients.

- Proven and respected track record
- Unrivalled service and competitive rates
- Strong emphasis on Health & Safety, with professional managers and advisors
- Expert supervision and project management
- Well-trained and experienced workforce, all of whom are directly employed
- Innovative design and tender planning service
- One stop service for clients, offering scaffolding, mastclimbers, hoists and loading platforms
- Project consultancy and management
- Modern and efficient handling with crane mounted delivery trucks and forklifts
- Large stock of plant and equipment, with depots in the UK, Ireland, Baltics and the UAE
- Accreditations including Building Confidence, Link-Up, NCCA Sentinel Scheme, FPAL, UVDB, OHSAS 18001 and ISO 14001.

## Sample Testimonials:

*"They continually top both our internal supplier measurement table and independent capability audits maintaining their enviable position as one of a very select number of our Preferred Status A Scaffolding Suppliers"*

**Michael T O'Conner - Project Commercial Director Carillion**

*"Brogan Group is complete! They have their own in-house scaffold design, a hoist division, offer system and traditional solutions, are experienced and have the capability to deliver technically demanding scaffold solutions using a workforce that is of the highest quality within the industry"*

**Alan Grant - Construction Manager BAM Construct UK**

# Company Values

## Our Company Values:

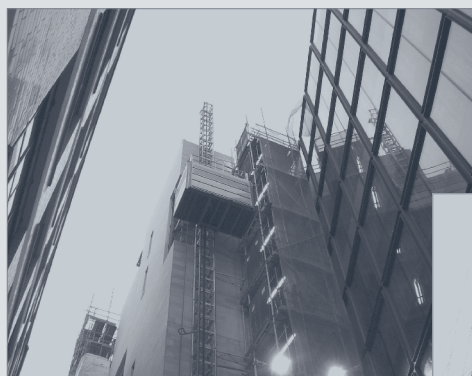
- Mutual Reward
- Partnership
- Stability
- Safety
- Performance
- Leadership
- Human Development
- Innovation
- Sustainability
- Social Responsibility



[www.polarbearsinternational.org](http://www.polarbearsinternational.org)



Brogan Group is a contributor to Polar Bears International, a non profit organisation dedicated to the worldwide conservation of the polar bear.



**BROGAN**  
**GROUP**

SCAFFOLDING, HOISTS & MASTCLIMBERS

The Railway Sidings  
Oakleigh Road South  
New Southgate  
London, N11 1HJ

(UK) Tel: 020 8361 0090  
Fax: 020 8361 8971

(IRE) Tel: 01 412 4438  
Fax: 01 412 4439

(UAE) Tel: 04 337 1480  
Fax: 04 337 1410

E-mail: [enquiries@brogangroup.com](mailto:enquiries@brogangroup.com)